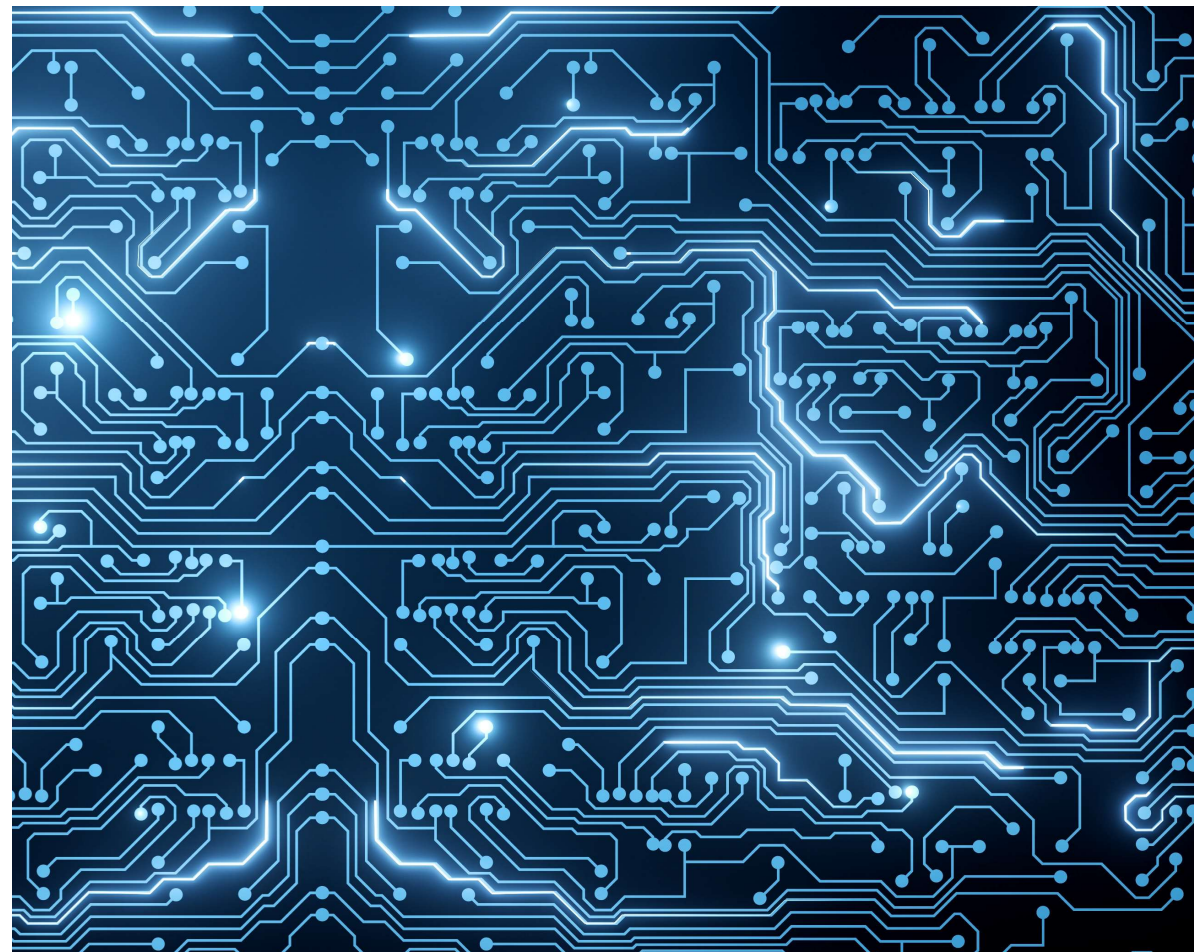


IoT Dashboard Implementation Into Mining Operations

Trevor Hadley

Operations Manager

Clarity Advanced Control



Context

- **Declining ore grades** and increasingly **variable feed**
- Increasingly **transient workforce** and decline of site specialists
- Lack of **mineral processing-specific instrumentation**
- Without the “eyes” and **declining “knowhow” to control mineral processes**, control is reactive
- Quality control, real-time process improvement and value chain optimisation is therefore not possible
- **Digitisation** in mining is now seen as a **key priority** for all operations



Enabling real-time process improvement through the development, implementation and commercialisation of emergent advanced instrumentation and control strategies

Clarity Advanced Control



Develop

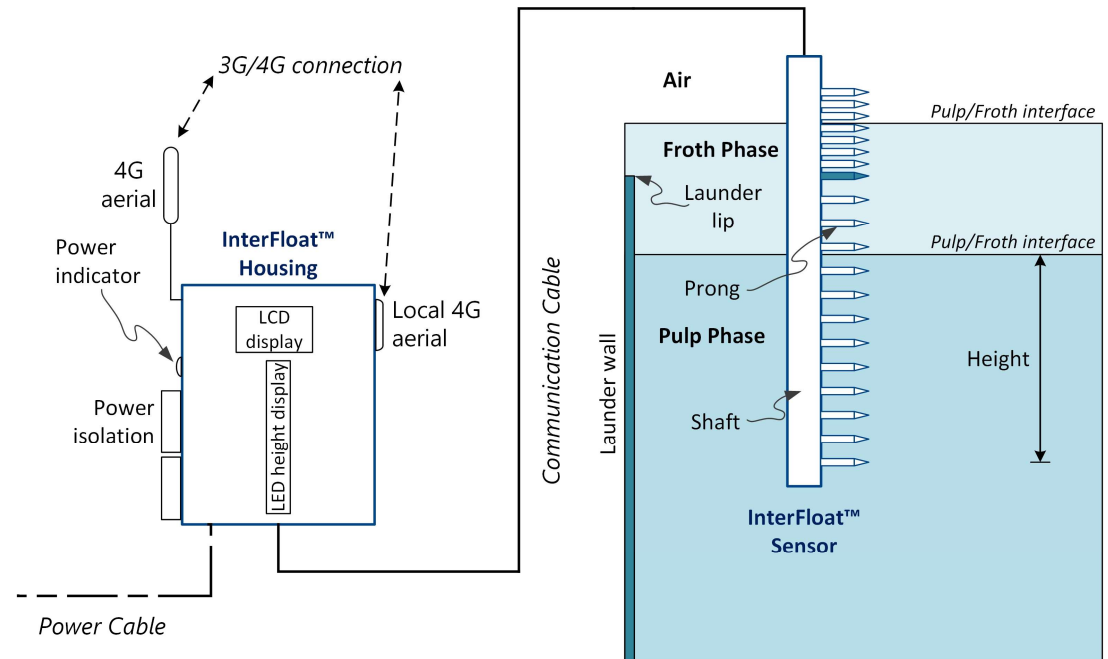
Implement

Commercialise

Bridging the implementation gap of new technologies and industry solutions

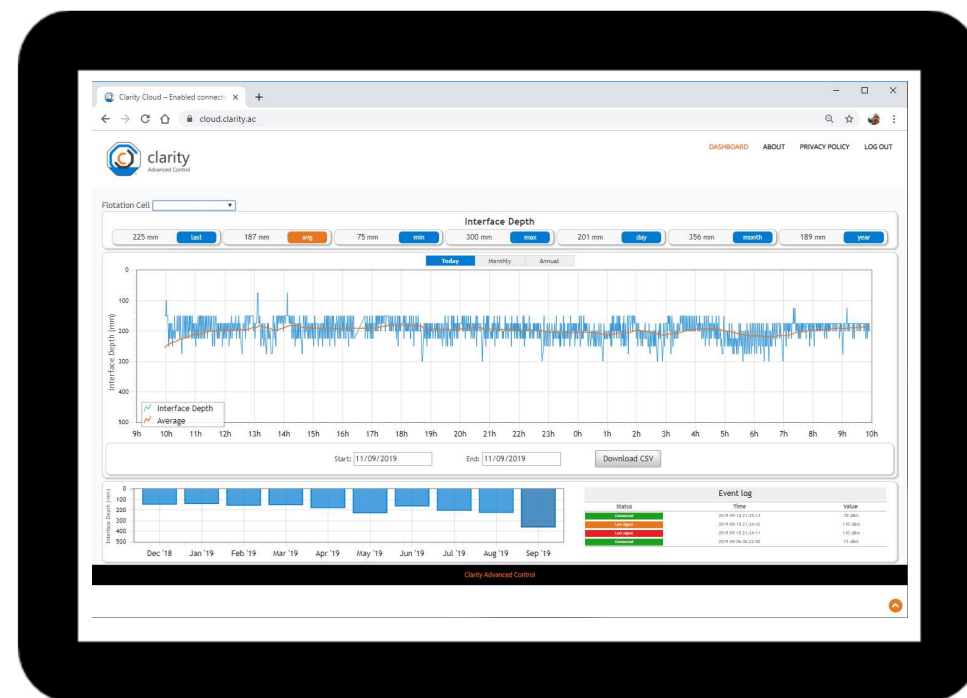


CSIRO InterFloat™ - Pulp/Froth Interface Detection



CSIRO InterFloat™ to Dashboard

To site
e.g. 4-20mA signal

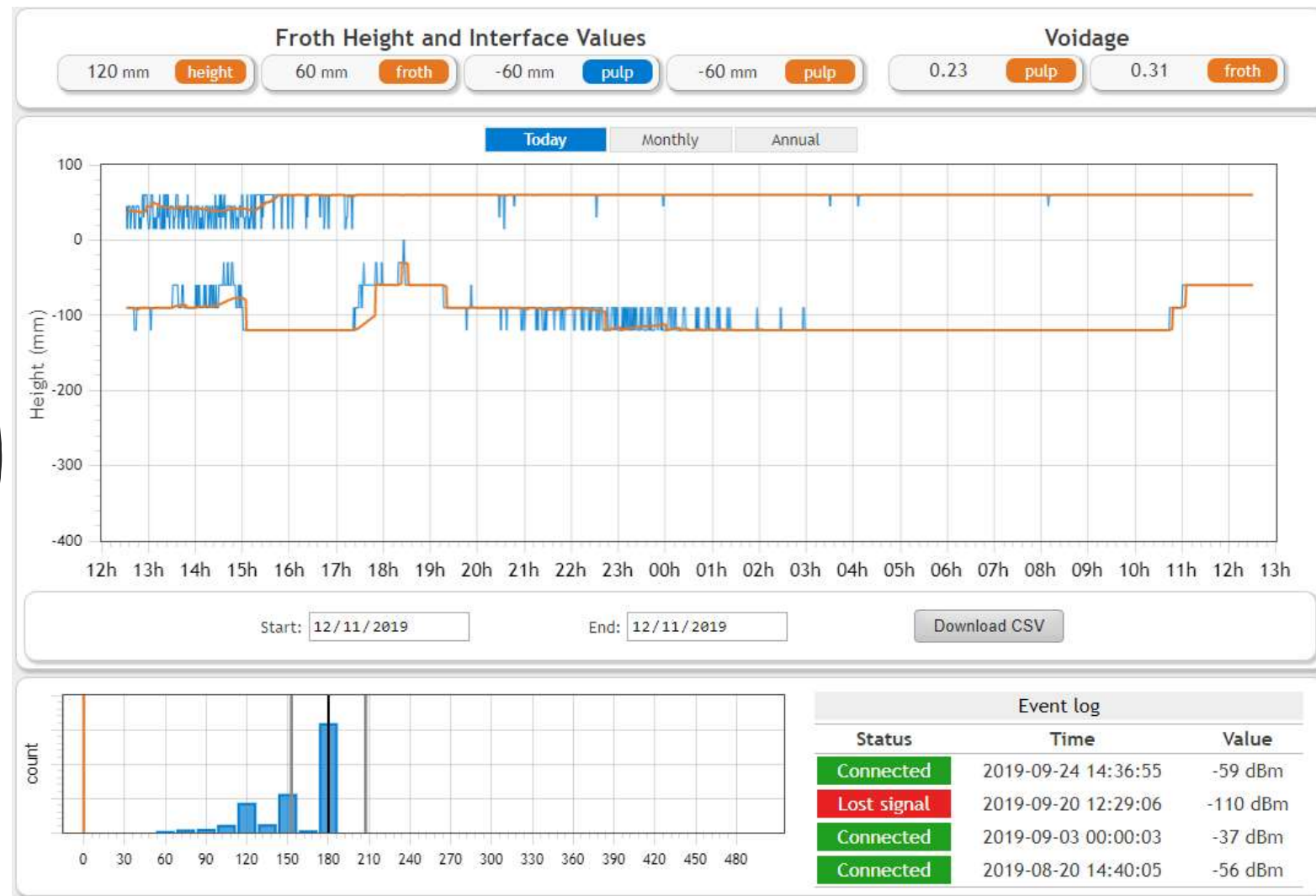


Dashboard – Victoria



Likely simulated data provided for voidage

Dashboard – Queensland



Likely simulated data provided for froth/air interface, froth height and voidage



Summary

- Complementary implementation
- Enabling process visualisation
- Context – application and location

**What would your site like to monitor in real time
that would make a real difference to your
operations?**

FUTURE MINING

2019

SYDNEY

19 - 20 Nov



AusIMM



UNSW
SYDNEY

futuremining.ausimm.com